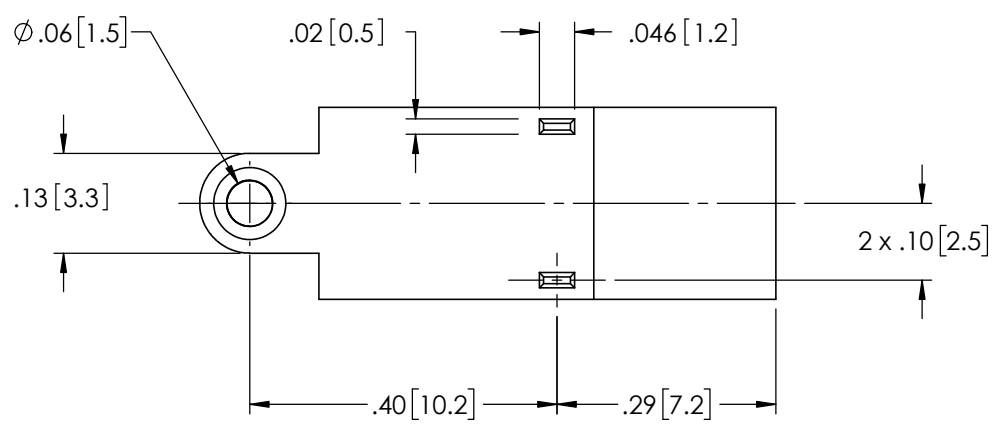


AUX VIEWS  
SCALE: 1:1




- NOTES:**
1. MATERIAL: PBT
  2. SIGNAL CONTACT PLATING: SOFT NICKEL, THEN SOFT GOLD
  3. DUMMY CONTACT PLATING: SOFT NICKEL
  4. PIN SETBACK: 0.08" (EN 60601 TouchProof)
  5. GENERAL PERFORMANCE (CONTACT POI FOR TEST CONDITIONS)  
EXTRACTION FORCE: 2-7 lbs  
LIFE CYCLE: 1000+ INSERTIONS  
HIPOT: 1000 VAC  
MAX. CURRENT: 8 A
  6. OPERATING TEMPERATURE: +5° C to + 60° C
  7. UL94 V-0/5V
  8. NOT RECOMMENDED FOR WAVE SOLDERING

G	REV PER ECO 24909 / SLH 11/19/15		
F	REV PER ECO 10990 /GS 01/18/08	1/31/08	JO
E	REV PER ECO 10367/BB 02/26/07	03/01/07	BB
REDRAWN IN SOLID WORKS/BB 02/26/07			
D	REV PER ECO 10043 JP 10/09/06	10/18/06	JAP
C	REV PER ECO 02187 /RS 08/09/96	08/14/96	RS
B	REV PER ECO 1268/SJ 07/05/95	07/05/95	WN
A	RELEASE PER ECO 00596/RS 04/26/94	05/04/94	RS
REV	DESCRIPTION	DATE	APPVD

<b>TOLERANCES</b> UNLESS OTHERWISE SPECIFIED ALL DIMENSIONS IN INCHES DIMENSIONS IN [ ] METRIC
<b>FRACTIONAL</b> ±1/64
<b>DECIMAL</b> .00 ±.01 [.25mm] .000 ±.005 [.127mm]
<b>ANGULAR</b> ±5°

APPROVALS	DATE
DRAWN BBRINDLE	01/31/94
CHECKED DJD	2/29/16
PROJ ENGR	
APPROVED JEO	2/29/16
PROJECT 1432	FSCM



MOLDING THE MEDICAL FUTURE  
6591 MERRIMAN ROAD, S.W., ROANOKE, VA, 24018  
PHONE: 540-772-7950 FAX: 540-989-7519

TITLE		JACK, PCB, 1.5mm, TOUCH PROOF	
SCALE		4:1	
SIZE	DWG	REV	SHT
A	36619-50	G	1 OF 1

THIS DRAWING CONTAINS PROPRIETARY INFORMATION AND MAY NOT BE ISSUED OR REPRODUCED, IN WHOLE OR IN PART, WITHOUT EXPRESS WRITTEN PERMISSION OF PLASTICS ONE INC