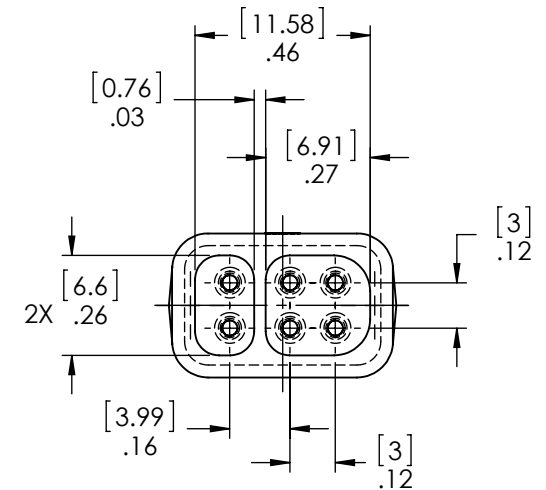
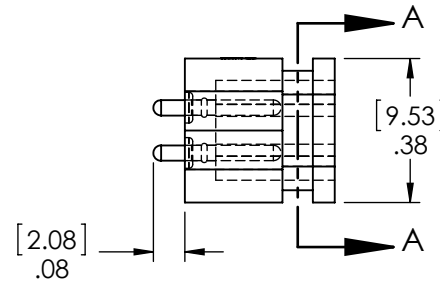
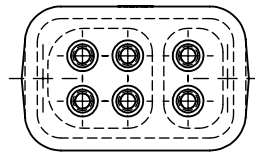


SECTION A-A
SCALE 2:1



C	REV PER ECO 22488 /BB 06/04/14	6/10/14	SLH
B	REV PER ECO 21153 /BB 01/27/14	04/25/14	BB
A	REL PER ECO 20443 XZ 6/5/13	6/7/13	XZ
REV	DESCRIPTION	DATE	BY

REVISIONS

THIS DRAWING CONTAINS CONFIDENTIAL AND PROPRIETARY INFORMATION AND MAY NOT BE ISSUED OR REPRODUCED, IN WHOLE, OR IN PART, WITHOUT THE EXPRESS WRITTEN PERMISSION OF PLASTICS ONE INC.

TOLERANCES
UNLESS OTHERWISE SPECIFIED
ALL DIMENSIONS IN INCHES
DIMENSIONS IN [] METRIC

FRACTIONAL
±1/64

DECIMAL
.00 ±.01 [.25mm]
.000 ±.005 [.127mm]

ANGULAR
±.5°

APPROVALS	DATE
DRAWN XZHOU	6/5/13
CHECKED	
PROJ ENGR	
APPROVED	
PROJECT 7761	FSCM

PlasticsOne
Medical Design and Manufacture
6591 MERRIMAN ROAD, S.W., ROANOKE, VA, 24018
PHONE: 540-772-7950 FAX: 540-989-7519

TITLE
JACK, 6 POLE, STRAIGHT

SCALE 2:1

SIZE A	DWG 41590-50	REV C	SHT 1
			OF 1