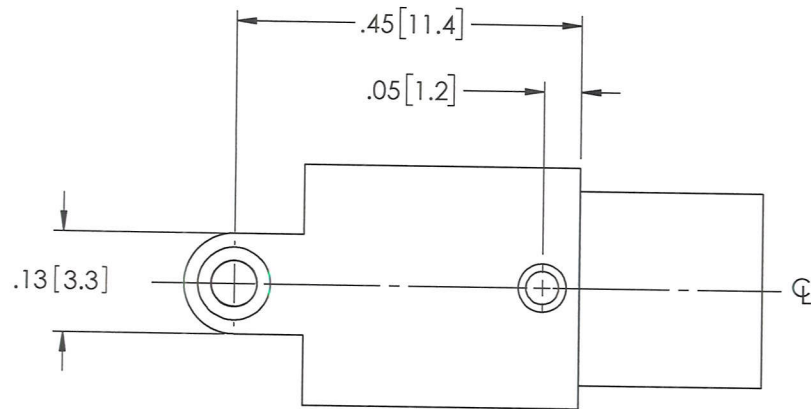


AUX Views
SCALE: 1:1



NOTES:

1. MATERIAL: PBT
OTHER MATERIALS AVAILABLE
2. SIGNAL CONTACT PLATING: SOFT NICKEL, THEN SOFT GOLD
3. PIN SETBACK: 0.08" (EN 60601 TouchProof)
4. GENERAL PERFORMANCE (CONTACT POI FOR TEST CONDITIONS)
EXTRACTION FORCE: 2-7 lbs
LIFE CYCLE: 1000+ INSERTIONS
HIPOT: 1000 VAC
MAX. CURRENT: 8 A
5. OPERATING TEMPERATURE: +5° C to + 60° C
6. UL94 V-0/5V
7. WAVE SOLDERABLE

2	1	BRASS	PIN, POI DWG 36651
1	AR	SEE OPTION BLOCK	JACK, BODY
ITEM	QTY	MATERIAL	DESCRIPTION

B	Revise per ECO 24909 SLH 6-10-15	3/2/16	SUA
A	REL PER ECO 22882 XZ 8/1/14	8/12/14	SH
REV	DESCRIPTION	DATE	APPVD

REVISIONS

THIS DRAWING CONTAINS CONFIDENTIAL AND PROPRIETARY INFORMATION AND MAY NOT BE ISSUED OR REPRODUCED, IN WHOLE, OR IN PART, WITHOUT THE EXPRESS WRITTEN PERMISSION OF PLASTICS ONE INC.

TOLERANCES UNLESS OTHERWISE SPECIFIED ALL DIMENSIONS IN INCHES DIMENSIONS IN [] METRIC		APPROVALS	DATE
FRACTIONAL ±1/64		DRAWN XZHOU	8/1/14
DECIMAL .00 ±.01 [.25mm] .000 ±.005 [.127mm]		CHECKED DJD	3/2/16
ANGULAR ±.5°		PROJ ENGR	
		APPROVED [Signature]	3/2/16
		PROJECT 7792	FSCM

PlasticsOne[®]
Medical Design and Manufacture
 6591 MERRIMAN ROAD, S.W., ROANOKE, VA, 24018
 PHONE: 540-772-7950 FAX: 540-963-7519

TITLE JACK, PCB, 1.5mm, TOUCHPROOF WAVE SOLDER VERSION WITH POST		SCALE 4:1
SIZE A	DWG 41829-50	REV B
		SHT 1 OF 1