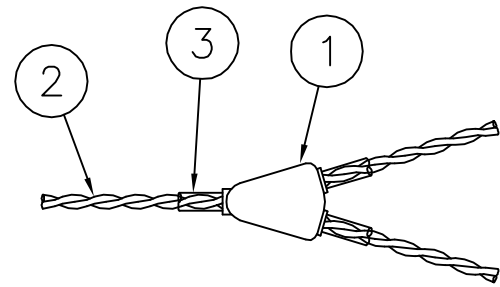
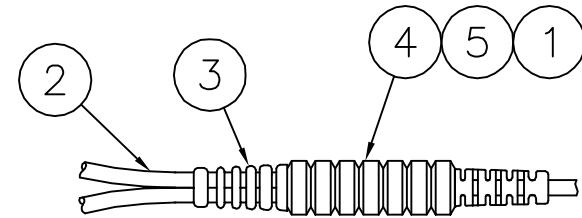


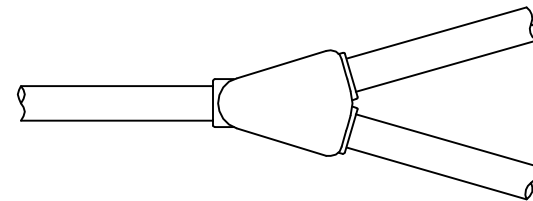
BIFURCATIONS (Shown Actual Size)



Y07



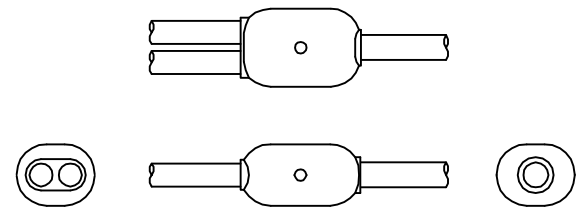
Y04



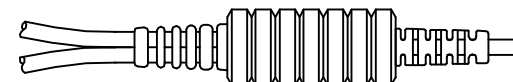
Y10



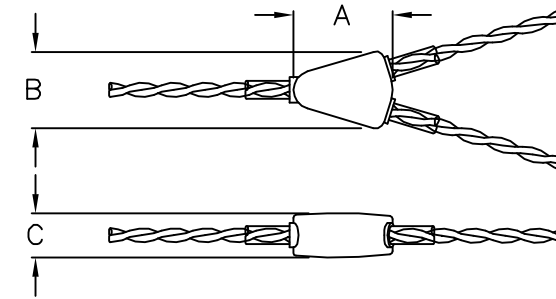
Y05



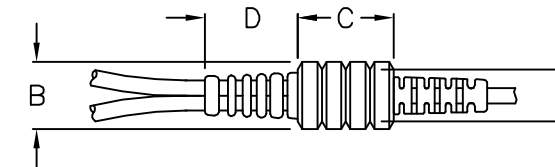
Y03



Y06



CONNECTOR	A (IN/MM)	B (IN/MM)	C (IN/MM)	D (IN/MM)			
Y03	.63/15.88	.41/10.31	.32/8.13	N/A			
Y07	.52/13.21	.40/10.16	.23/5.84	N/A			
Y10	.70/17.78	.55/14.00	.315/8.01	N/A			



CONNECTOR	A MINOR DIA. (IN/MM)	B MAJOR DIA. (IN/MM)	C BODY O.A.L. (IN/MM)	D BODY LENGTH (IN/MM)			
Y04	.20/5.08	.28/7.11	SEE NOTE	.54/13.59 (2X)			
Y05	.27/6.86	.35/8.89	SEE NOTE	.54/13.59 (2X)			
Y06	.31/7.92	.39/9.91	SEE NOTE	.54/13.59 (2X)			

FEATURES :

- 1) Junction wired to suit customer circuitry.
- 2) Wire size and type options to suit specific applications.
- 3) Bend relief type, size and length to suit wire selected.
- 4) Chemical resistant molding material - fifteen standard color options.
- 5) Circuitry Components can be encapsulated in pod.

NOTE : Available in lengths of .25, .38, .50, .63, .75, .88, 1.13, 1.25, 1.38, 1.50, 1.63, 1.75, and 2.00
Example : View shown above is Y5/0.50